

Microsoft Azure

Always Available, Effortlessly Accessible,
and Endlessly Reliable



AZ – 120

Azure for SAP Workloads Specialty

Overview

As a candidate for this certification, you're an architect or engineer with extensive experience and knowledge of the systems applications and products (SAP) system landscape and industry standards that are specific to the initial migration or integration and the long-term operation of an SAP solution on Microsoft Azure.

As an architect or engineer for Azure for SAP Workloads, you're responsible for:

- Making recommendations on services.
- Adjusting resources as appropriate for optimal resiliency, performance, scale, provision, size, and monitoring.

In these roles, you implement solutions by partnering with:

- Cloud administrators
- Cloud database administrators
- Clients

You should have extensive experience and knowledge of the following applications and services: SAP high-performance Analytic Appliance (HANA), SAP Business Suite 4 (S/4) HANA, SAP NetWeaver, SAP Business Warehouse 4 (BW/4) HANA, servers for SAP applications and databases, Azure portal, Azure Marketplace, and Azure Resource Manager templates.

You should also have experience with:

- Virtualization
- Cloud infrastructure
- Storage structures
- High availability design
- Disaster recovery design
- Data protection concepts
- Networking

For this exam, we strongly recommend that candidates have an Azure Administrator Associate certification.

Prerequisites

Before attending this course, students should have:

- Hands-on experience with Azure IaaS and PaaS solutions, including VM, VNet, Load Balancers, Storage (Blob, Files, Disks).
- Understanding of on-premises and cloud virtualization technologies, including: VMs, virtual networking, and virtual hard disks.
- Understanding of network configuration, including TCP/IP, Domain Name System (DNS), virtual private networks (VPNs), firewalls, and encryption technologies.
- Understanding of Microsoft Entra concepts
- Experience with Linux/Unix environments.
- Solid knowledge of SAP Applications, SAP HANA, S/4HANA, SAP NetWeaver, SAP BW, OS Servers for SAP Applications and Databases.
- Understanding of SAP HANA deployment and configuration.
- Hands-on experience with SAP HANA administration.
- Knowledge of SAP products such as SAP HANA or SAP NetWeaver

Prerequisite Courses (or equivalent knowledge and hands-on experience):

- [Microsoft Azure Administrator Training \(AZ-104\)](#)

Audience Profile

As a candidate for this exam, you're an architect or engineer with extensive experience and knowledge of the systems applications and products (SAP) system landscape and industry standards that are specific to the initial migration or integration and the long-term operation of an SAP solution on Microsoft Azure.

As an architect or engineer for Azure for SAP Workloads, you're responsible for:

- Making recommendations on services.
- Adjusting resources as appropriate for optimal resiliency, performance, scale, provision, size, and monitoring.

In these roles, you implement solutions by partnering with:

- Cloud administrators
- Cloud database administrators
- Clients

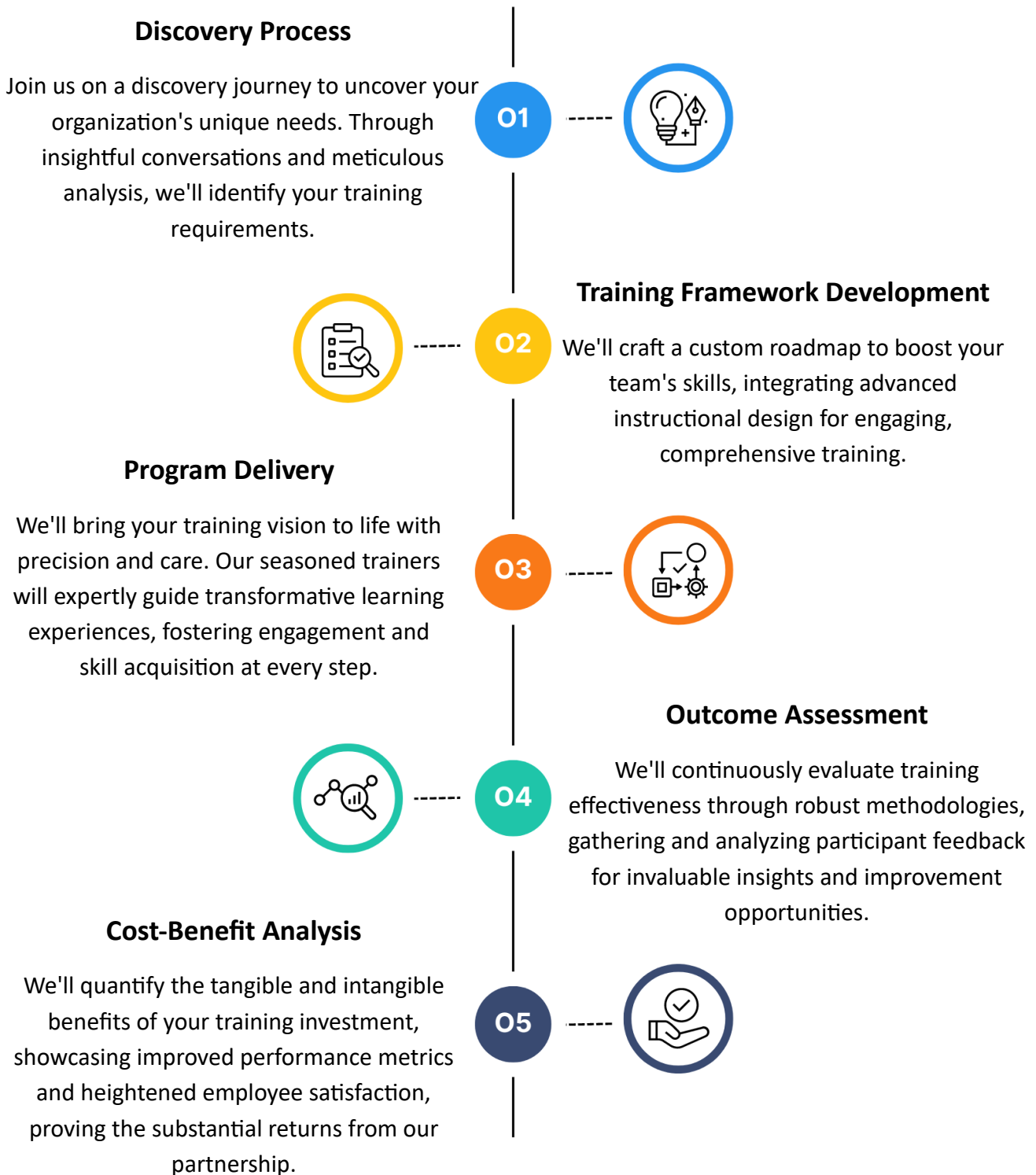
Course Level

- Intermediate

Course Duration

- 3 Days – 24 Hours

Creating Tailor - Made Training Programs to Meet Your **Specific Goals**



Course Outline

As a candidate for this certification, you're an architect or engineer with extensive experience and knowledge of the systems applications and products (SAP) system landscape and industry standards that are specific to the initial migration or integration and the long-term operation of an SAP solution on Microsoft Azure.

Module 1: Explore Azure for SAP workloads

- Lesson: Overview of Azure for SAP workloads
- Lesson: Common terms and meanings
- Lesson: SAP certified configurations
- Lesson: The architecture to deploy SAP NetWeaver with AnyDB on Azure VMs
- Lesson: The architecture to deploy S/4HANA in a high availability environment that supports disaster recovery on Azure

Module 2: Explore the foundations of IaaS for SAP on Azure

- Lesson: Compute
- Lesson: Networking
- Lesson: Storage
- Lesson: Databases
- **Lab:** Implement Linux clustering for SAP on Azure virtual machines
- **Lab:** Implement Windows clustering for SAP on Azure virtual machines

Module 3: Explore the foundations of identity and governance for SAP on Azure

- Lesson: Identity services
- Lesson: Remote management
- Lesson: Governance and manageability

Module 4: Deploy SAP on Azure

- Lesson: Azure VM deployment methodologies
- Lesson: Single-instance implementations
- Lesson: Implementing HA SAP NetWeaver with AnyDB on Azure VMs
- Lesson: Azure Center for SAP solutions (ACSS)
- **Lab:** Implement SAP architecture on Azure VMs running Linux
- **Lab:** Implement SAP Infrastructure with ACSS

Module 5: Ensure business continuity and implement disaster recovery for SAP solutions on Azure

- Lesson: High availability of SAP workloads in Azure
- Lesson: Disaster recovery of SAP workloads in Azure
- Lesson: Performing backups and restores

Module 6: Migrate SAP workloads to Azure

- Lesson: Complete the SAP Migration checklist
- Lesson: Review DMO methodologies
- Lesson: Implement cloud migration options
- Lesson: Migrate a very large database to Azure

Module 7: Monitor and troubleshoot Azure for SAP workloads

- Lesson: Monitoring requirements of Azure for SAP workloads
- Lesson: Configuring the Azure Extension for SAP
- Lesson: Azure VM licensing, pricing, and support

Indus Tech Services

Who We Are....

Indus Tech Services is an IT company that specializes in providing comprehensive training, consulting & implementation services for software solutions designed to address the diverse business challenges faced by organizations today. With a passion for technology and a deep understanding of business processes, Indus Tech is committed to empowering businesses to optimize their operations, boost productivity, and drive sustainable growth.

Indus Tech Services and Microsoft Partnership

As a proud **Microsoft Partner**, **Indus Tech Services** is uniquely equipped to deliver top-tier training and certification programs designed to meet the evolving needs of today's workforce. Our partnership with Microsoft allows us to offer direct access to the latest tools, resources, and industry insights, ensuring that our courses are aligned with the most current technology trends. This collaboration enables us to provide unparalleled support to our students, helping them gain the skills and knowledge required to excel in their careers. By choosing Indus Tech Services, you're not just learning; you're gaining a competitive edge with Microsoft-backed expertise and certification.

Why Choose Us...

From time to time, life serves up a profound nudge, urging us to step beyond our routines and make a difference in the world. Indus Tech Services emerged from one such compelling wake-up call. We are not just a company; we are a dedicated force with a belief in providing solutions to organizations, regardless of their size, and we infuse a human touch into everything we do.

Our Expertise

With over 25 years of collective experience navigating the intricacies of daily business transactions, irrespective of geographical, cultural, time zone, or language barriers, our team has honed their expertise to meet any challenge head-on. This wealth of experience has armed our resources with an unparalleled understanding and skill set to tackle a broad spectrum of obstacles.

Training

With two decades of unwavering commitment and a global footprint, our company is a true pioneer in the fields of linguistic, transactional, technical, and behavioural training for some of the world's largest corporate entities. Our unparalleled expertise has been refined through years of dedication and innovation, making us the go-to choice for businesses seeking transformative training solutions.

Consulting

Our company has been at the forefront of providing world-class IT consulting services to organizations spanning the globe. With an extensive and proven track record, we have honed our expertise to meet the ever-evolving technological needs and challenges faced by businesses, regardless of their scale or industry.

Implementation

Our experience covers a broad spectrum of IT implementation services, including system integration, software deployment, network architecture, cloud migration, and infrastructure setup. We understand that the successful execution of IT projects is pivotal to an organization's growth and efficiency. Therefore, we bring a depth of knowledge and a commitment to delivering results that set us apart.

To know more contact us at info@industechservices.com or call us at +91 - 99961 61170.